

CONTACT DATA		CHASSIS MOUNTING DATA		
		X-DIMENSION	CLEARANCE HOLE FOR NO.2 SCREW	NO.2 -56 THREAD
OPEN ENTRY	SOLDER CUP			
	EYELET			
	STRAIGHT			
CLOSED ENTRY	WIRE WRAP	0.025 SQ. X	.24	HAN-13KLT3
	EYELET			
	STRAIGHT			

ELECTRICAL

Contact Rating 3 Amperes
 Withstanding Voltage:

- Contact to Contact Sea Level. 1000 VRMS Minimum
- Contact to Ground Sea Level. 1800 VRMS Minimum
- Contact to Contact 70,000 Ft. 300 VRMS Minimum
- Contact to Ground 70,000 Ft. 450 VRMS Minimum

MECHANICAL

- Creepage Between Contacts 0.02 Minimum
- Air Space Between Contacts 0.02 Minimum
- Contacts to Accept 0.020 ± 0.001 DIA. Pins

Contacts:

- Heat Treated Beryllium Copper
- Gold Plated over Copper or Nickel Plate

Mounting Hardware:

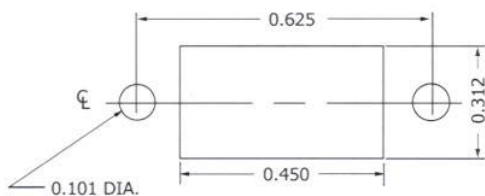
- Threaded or Clearance Hole Mounting Bushings

Insulation Material:

- Choice of "MIL Approved" Thermosetting Insulations (See Page 45)

Temperature Ratings: -65°C to +125°C

Weight of Socket with Mountings: 0.10 oz.



RECOMMENDED CHASSIS CUT-OUT