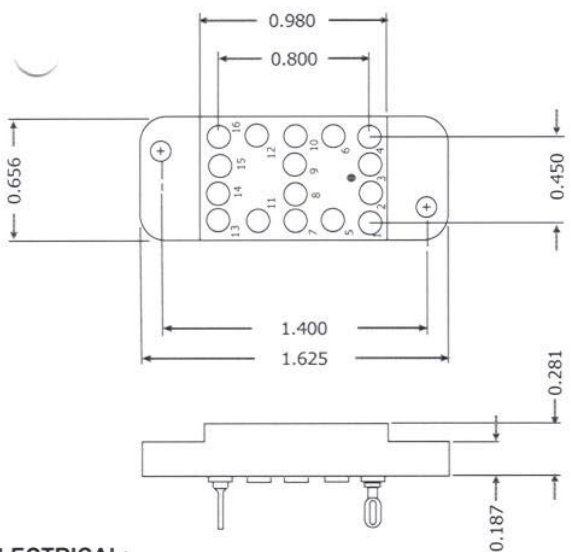




# HRCE SERIES



**ELECTRICAL:**

Wire Size:  
 Solder Cup Type. . . . . One #20 AWG  
 Eyelet Type. . . . . Two #20 AWG or  
 Three #22 AWG  
 Current Rating. . . . . 3 Amperes  
 Withstanding Voltage:  
 Contact to Contact Sea Level. . . 1200 VRMS Minimum  
 Contact to Ground Sea Level. . . .3300 VRMS Minimum  
 Contact to Contact 70,000 Ft. . . .300 VRMS Minimum  
 Contact to Ground 70,000 Ft. . . .675 VRMS Minimum

**MECHANICAL:**

Creepage Between Contacts. . . . . 0.12 Minimum  
 Air Space Between Contacts. . . . . 0.05 Minimum  
 Contacts to Accept 0.030 ± 0.001 DIA. Pins  
 Contacts:  
 Spring Temper Grade "A" Phosphor Bronze or  
 Heat Treated Beryllium Copper  
 Gold Plated over Copper or Nickel Plate

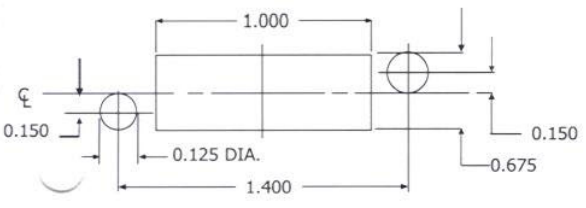
**Mounting Hardware:**

Special Studs, Screws, Lockwashers, and Nuts

**Insulation Material:**

Choice of "MIL Approved" Thermosetting  
 Insulations (See Page 45)

Temperature Ratings: -65°C to +125°C  
 Weight of Socket with Mountings: 0.45 oz.



RECOMMENDED CHASSIS CUT-OUT

CONTACT DATA	CHASSIS MOUNTING DATA					
	CHASSIS THICKNESS	X-DIMENSION	BELOW CHASSIS	BELOW CHASSIS	ABOVE CHASSIS	
OPEN ENTRY	SOLDER CUP	1/16 .17	HRCE - 1		HRCE - 2	
		3/32 .14				
		1/8 .12				
	EYELET	1/16 .17	HRCE - 6		HRCE - 5	
		3/32 .14				
		1/8 .12				
	STRAIGHT	1/16			HRCE - 4	
		3/32				
	STRAIGHT	1/16				
		3/32			HRCE - 24	
	WIRE WRAP	0.045 SQ. 0.80	1/16 .17	HRCE - 28		
			3/32 .14			
		1/8 .12				
WIRE WRAP	0.025 SQ. 0.68	1/16 .17	HRCE - 18			
		3/32 .14				
		1/8 .12				
CLOSED ENTRY	SOLDER CUP	1/16 .17	HRCE - 1K		HRCE - 2K	
		3/32 .14				
		1/8 .12				
	EYELET	1/16 .17	HRCE - 6K		HRCE - 5K	
		3/32 .14				
		1/8 .12				
	STRAIGHT	1/16			HRCE - 4K	
		3/32				
	STRAIGHT	15/64	1/16			HRCE - 24K
		3/32				
	WIRE WRAP	0.045 SQ. 5/8	1/16 .17	HRCE - 28K		
			3/32 .14			
		1/8 .12				
WIRE WRAP	0.025 SQ. 0.72	1/16 .17	HRCE - 18K			
		3/32 .14				
		1/8 .12				