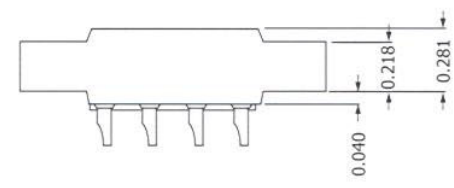
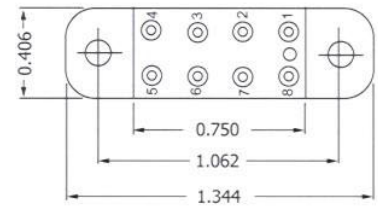
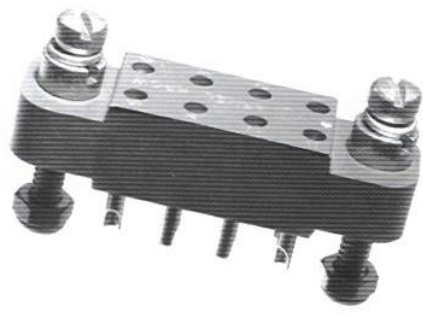


HRCW SERIES



CONTACT DATA		CHASSIS MOUNTING DATA		
		CHASSIS THICKNESS	X-DIMENSION	
OPEN ENTRY	SOLDER CUP	1/16	.14	HRCW - 1 HRCW - 22
		3/32	.11	HRCW - 31 HRCW - 32
		1/8	.08	HRCW - 42
	EYELET	1/16	.14	HRCW - 5 HRCW - 6
		3/32	.11	HRCW - 35 HRCW - 36
		1/8	.08	HRCW - 46
	STRAIGHT	1/16	.14	HRCW - 24
		3/32	.11	
		1/8	.08	
CLOSED ENTRY	SOLDER CUP	1/16	.14	HRCW - 1K HRCW - 22K
		3/32	.11	HRCW - 31K HRCW - 32K
		1/8	.08	HRCW - 42K
	EYELET	1/16	.14	HRCW - 5K HRCW - 6K
		3/32	.11	HRCW - 35K HRCW - 36K
		1/8	.08	HRCW - 46K
	STRAIGHT	1/16		HRCW - 24K
		3/32		
		1/8		

ELECTRICAL

Wire Size:
 Solder Cup Type One #20 AWG
 Eyelet Type Two #20 AWG or Three #22 AWG

Current Rating 3 Amperes
 Withstanding Voltage:
 Contact to Contact Sea Level . . . 2700 VRMS Minimum
 Contact to Ground Sea Level . . . 2250 VRMS Minimum
 Contact to Contact 70,000 Ft. . . 560 VRMS Minimum
 Contact to Ground 70,000 Ft. . . 500 VRMS Minimum

MECHANICAL

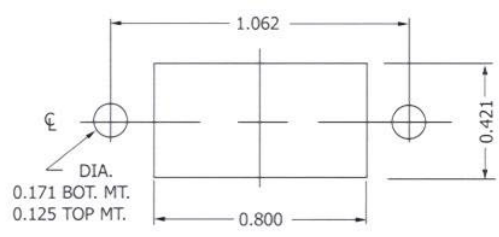
Creepage Between Contacts 0.16 Minimum
 Air Space Between Contacts 0.11 Minimum
 Contacts to Accept 0.030 ± 0.001 DIA. Pins

Contacts:
 Spring Temper Grade "A" Phosphor Bronze, or
 Heat Treated Beryllium Copper
 Gold Plated over Copper or Nickel Plate

Mounting Hardware:
 Special Studs, Screws, Lockwashers, and Nuts

Insulation Material:
 Choice of "MIL Approved" Thermosetting
 Insulations (See Page 45)

Temperature Ratings: -65°C to +125°C
 Weight of Socket with Mountings: 0.27 oz.



RECOMMENDED CHASSIS CUT-OUT