

CONTACT DATA	CHASSIS MOUNTING DATA				
	CHASSIS THICKNESS	X-DIMENSION	BELOW CHASSIS		ABOVE CHASSIS
			X	X	0.23
 SOLDER CUP	1/16	.17	HRKA - 1		HRKA - 2
	3/32	.14		HRKA - 31	HRKA - 32
	1/8	.12		HRKA - 41	HRKA - 42
 EYELET	1/16	.17	HRKA - 5		HRKA - 6
	3/32	.14		HRKA - 35	HRKA - 36
	1/8	.12		HRKA - 45	HRKA - 46
 STRAIGHT	1/16				HRKA - 4
	3/32				
	1/8				

ELECTRICAL

- Wire Size:
- Solder Cup Type: One #20 AWG
 - Eyelet Type: Two #20 AWG or Three #22 AWG
- Current Rating: 3 Amperes
- Withstanding Voltage:
- Contact to Contact Sea Level 1000 VRMS Minimum
 - Contact to Ground Sea Level 1800 VRMS Minimum
 - Contact to Contact 70,000 Ft. 300 VRMS Minimum
 - Contact to Ground 70,000 Ft. 450 VRMS Minimum

MECHANICAL

- Creepage Between Contacts 0.09 Minimum
- Air Space Between Contacts 0.03 Minimum
- Contacts to Accept 0.030 ± 0.001 DIA. Pins

Contacts:

- Spring Temper Grade "A" Phosphor Bronze, or Heat Treated Beryllium Copper
- Gold Plated over Copper or Nickel Plate

Mounting Hardware:

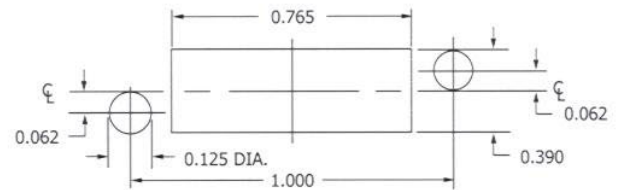
- Special Studs, Screws, Lockwashers, and Nuts

Insulation Material:

- Choice of "MIL Approved" Thermosetting Insulations (See Page 45)

Temperature Ratings: -65°C to +125°C

Weight of Socket with Mountings: 0.24 oz.



RECOMMENDED CHASSIS CUT-OUT