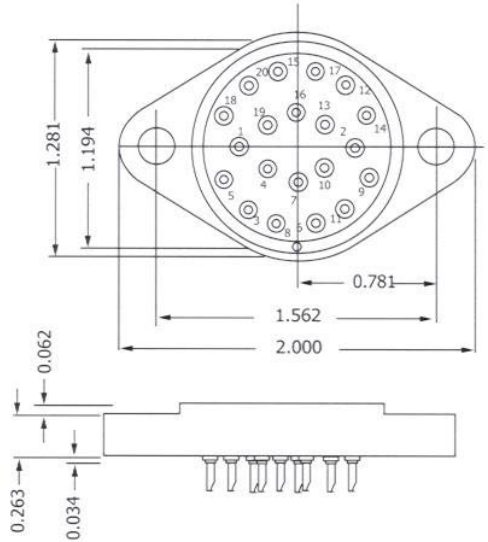
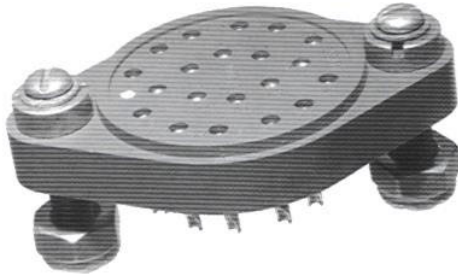
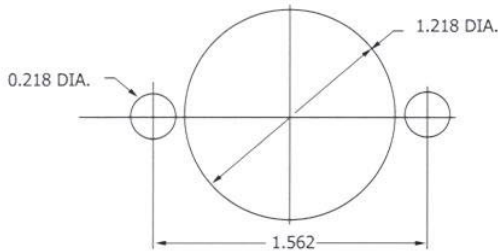


HRSE SERIES



CONTACT DATA	CHASSIS MOUNTING DATA				
	CHASSIS THICKNESS	X-DIMENSION	BELOW CHASSIS	BELOW CHASSIS	ABOVE CHASSIS
 SOLDER CUP	3/16	1/16	.12	HRSE - 1	HRSE - 2
		3/32	.09	HRSE - 31	HRSE - 32
		1/8	.06	HRSE - 41	HRSE - 42
 EYELET		1/16	.12	HRSE - 5	HRSE - 6
		3/32	.09	HRSE - 35	HRSE - 36
		1/8	.06	HRSE - 45	HRSE - 46
 TURRET		1/16	.12	HRSE - 3	HRSE - 4
		3/32	.09	HRSE - 33	HRSE - 34
		1/8	.06	HRSE - 43	HRSE - 44
 TAPER PIN		1/16	.12	HRSE - 7	HRSE - 8
		3/32	.09	HRSE - 37	HRSE - 38
		1/8	.06	HRSE - 47	HRSE - 48



RECOMMENDED CHASSIS CUT-OUT

ELECTRICAL

Wire Size:

- Solder Cup Type One #20 AWG
 - Turret Type Two #20 AWG
 - Eyelet Type Three #22 AWG
 - Eyelet Type Two #20 AWG or Three #22 AWG
 - Taper Type One AMP "37" Taper Receptacle
- Current Rating 7.5 Amperes

Withstanding Voltage:

- Contact to Contact Sea Level 2700 VRMS Minimum
- Contact to Ground Sea Level 2700 VRMS Minimum
- Contact to Contact 70,000 Ft. 560 VRMS Minimum
- Contact to Ground 70,000 Ft. 560 VRMS Minimum

MECHANICAL

- Creepage Between Contacts 0.16 Minimum
- Air Space Between Contacts 0.09 Minimum
- Contacts to Accept 0.040 ±0.001 DIA. Pins

Contacts:

- Spring Temper Grade "A" Phosphor Bronze, or Heat Treated Beryllium Copper
- Gold Plated over Copper or Nickel Plate

Mounting Hardware:

- Special Studs, Screws, Lockwashers, and Nuts

Insulation Material:

- Choice of "MIL Approved" Thermosetting Insulations (See Page 45)

Temperature Ratings: -65°C to +125°C

Weight of Socket with Mountings: 0.96 oz.