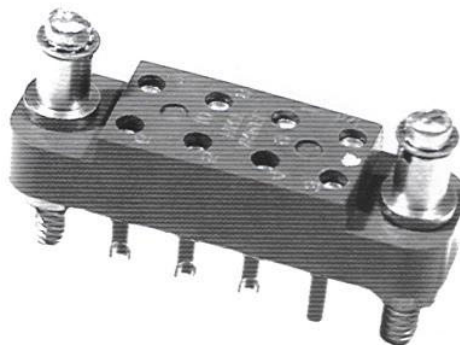
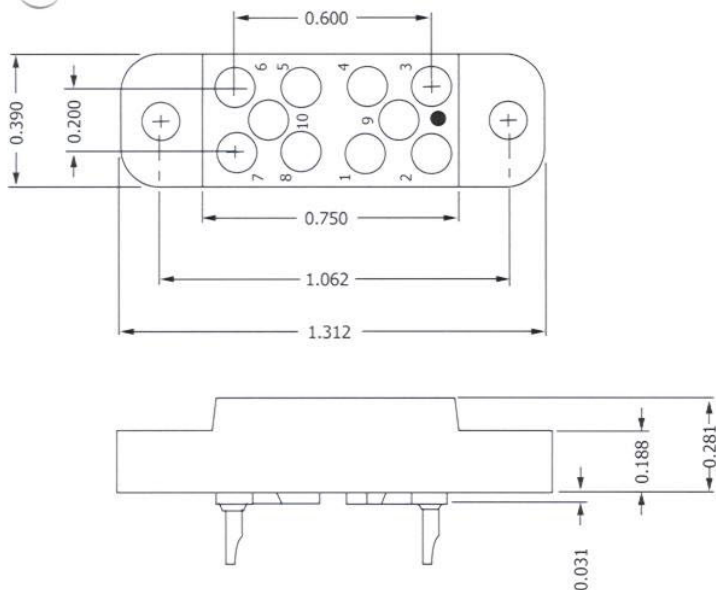




# HRTA SERIES



### ELECTRICAL:

#### Wire Size

- Solder Cup Type. . . . . One #20 AWG
- Eyelet Type. . . . . Two #20 AWG or Three #22 AWG

Current Rating. . . . . 3 Amperes

#### Withstanding Voltage:

- Contact to Contact Sea Level. . .1500 VRMS Minimum
- Contact to Ground Sea Level. . .1500 VRMS Minimum
- Contact to Contact 70,000 Ft. . . .375 VRMS Minimum
- Contact to Ground 70,000Ft. . . .375 VRMS Minimum

### MECHANICAL:

- Creepage Between Contacts. . . . . 0.17 Minimum
- Air Space Between Contacts. . . . . 0.11 Minimum
- Contacts to Accept 0.030 ± 0.001 DIA. Pins

#### Contacts:

- Spring Temper Grade "A" Phosphor Bronze or Heat Treated Beryllium Copper
- Gold Plated over Copper or Nickel Plate

#### Mounting Hardware:

- Special Studs, Screws, Lockwashers, and Nuts

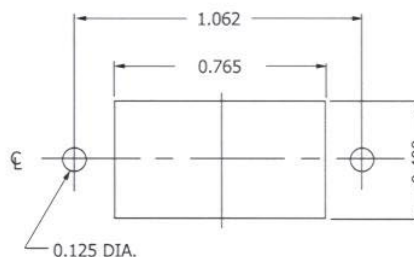
#### Insulation Material

- Choice of "MIL Approved" Thermosetting Insulations (See Page 45)

Temperature Ratings: -65°C to +125°C

Weight of Socket with Mountings: 0.30 oz.

CONTACT DATA	CHASSIS MOUNTING DATA					
	CHASSIS THICKNESS	X-DIMENSION	BELOW CHASSIS	BELOW CHASSIS	ABOVE CHASSIS	
OPEN ENTRY	SOLDER CUP	3/16	.17	HRTA - 1		HRTA - 2
		3/32	.14		HRTA - 31	
	EYELET	3/8	.12		HRTA - 41	
		3/16	.17	HRTA - 5		
CLOSED ENTRY	STRAIGHT	3/32	.14		HRTA - 35	
		3/8	.12		HRTA - 45	
		1/16				HRTA - 4
CLOSED ENTRY	SOLDER CUP	3/16	.17	HRTA - 1K		HRTA - 2K
		3/32	.14			
	EYELET	3/8	.12			
		3/16	.17	HRTA - 5K		
CLOSED ENTRY	STRAIGHT	3/32	.14		HRTA - 35K	
		3/8	.12		HRTA - 45K	
CLOSED ENTRY	STRAIGHT	1/16				HRTA - 4K
		3/32				HRTA - 34K



RECOMMENDED CHASSIS CUT-OUT