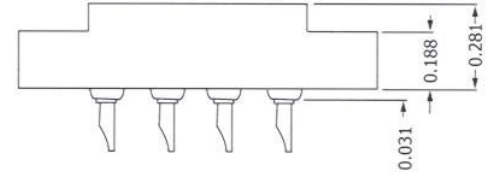
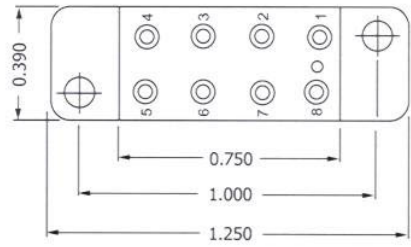
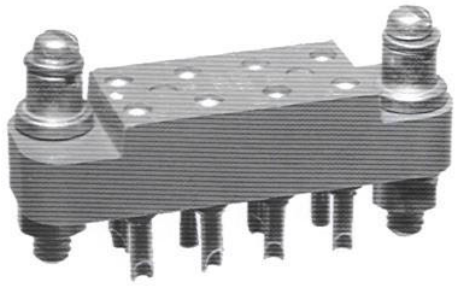


HRTS SERIES



CONTACT DATA	CHASSIS MOUNTING DATA				
	CHASSIS THICK KNESSES X-DIMENSION		BELOW CHASSIS	BELOW CHASSIS	ABOVE CHASSIS
OPEN ENTRY	SOLDER CUP 1/16	1/16 .17	HRTS - 13		HRTS - 14
		3/32 .14			
		1/8 .12			
	EYELET 1/4	1/16 .17	HRTS - 17		HRTS - 18
		3/32 .14			
		1/8 .12			
STRAIGHT	1/16 .17	HRTS - 15		HRTS - 16	
	3/32 .17	HRTS - 44			
	1/8 .17	HRTS - 518		HRTS - 412	
	0.045 SQ. 0.80				
CLOSED ENTRY	SOLDER CUP 3/16	1/16 .17	HRTS - 13K		HRTS - 14K
		3/32 .14			
		1/8 .12			
	EYELET 1/4	1/16 .17	HRTS - 17K		HRTS - 18K
		3/32 .14			
		1/8 .12			
STRAIGHT	1/16			HRTS - 16K	
	3/32				
	1/8				
0.025 SQ. 0.72	1/16 .17	HRTS - 518K		HRTS - 519K	
WIRE WRAP					

ELECTRICAL:

Wire Size
 Solder Cup Type.....One #20 AWG
 Eyelet Type.....Two #20 AWG or Three #22 AWG
 Current Rating.....3 Amperes
 Withstanding Voltage:
 Contact to Contact Sea Level...2700 VRMS Minimum
 Contact to Ground Sea Level...1500 VRMS Minimum
 Contact to Contact 70,000 Ft....560 VRMS Minimum
 Contact to Ground 70,000 Ft....375 VRMS Minimum

MECHANICAL

Creepage Between Contacts.....0.17 Minimum
 Air Space Between Contacts.....0.11 Minimum
 Contacts to Accept 0.030 ± 0.001 DIA. Pins

Contacts:

Spring Temper Grade "A" Phosphor Bronze, or Heat Treated Beryllium Copper
 Gold Plated over Copper or Nickel Plate

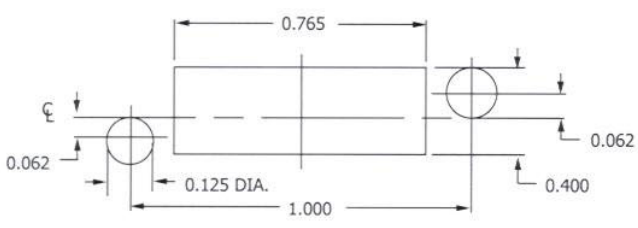
Mounting Hardware:

Special Studs, Screws, Lockwashers, and Nuts

Insulation Material:

Choice of "MIL Approved" Thermosetting Insulations (See Page 45)

Temperature Ratings: -65°C to + 125°C
 Weight of Socket with Mountings: 0.26 oz.



RECOMMENDED CHASSIS CUT-OUT