

ELECTRICAL

Wire Size:

- Solder Cup Type. One #20 AWG
- Eyelet Type. Two #20 AWG or
Three #22 AWG

Current Rating. 3 Amperes

Withstanding Voltage:

- Contact to Contact Sea Level. . . . 1500 VRMS Minimum
- Contact to Ground Sea Level. . . . 1000 VRMS Minimum
- Contact to Contact 70,000 Ft. 375 VRMS Minimum
- Contact to Ground 70,000 Ft. 300 VRMS Minimum

MECHANICAL

- Creepage Between Contacts. 0.11 Minimum
- Air Space Between Contacts. 0.05 Minimum
- Contacts to Accept 0.030 ± 0.001 DIA. Pins

Contacts:

- Spring Temper Grade "A" Phosphor Bronze, or
- Heat Treated Beryllium Copper
- Gold Plated over Copper or Nickel Plate

Mounting Hardware:

- Special Studs, Screws, Lockwashers, and Nuts

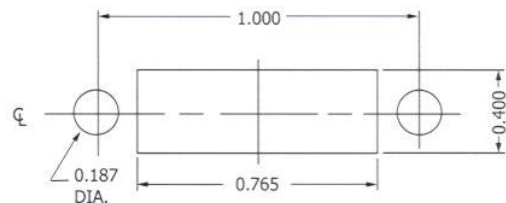
Insulation Material:

- Choice of "MIL Approved" Thermosetting
- Insulations (See Page 45)

Temperature Ratings: -65°C to +125°C

Weight of Socket with Mountings: 0.24 oz.

CONTACT DATA	CHASSIS MOUNTING DATA				
	CHASSIS T.HIC. KNEES	X-DIMENSION	BELOW CHASSIS	BELOW CHASSIS	ABOVE CHASSIS
 SOLDER CUP	1/16				
	3/32	.06		HRUA - 31	
	1/8				
 EYELET	1/16				
	3/32	.06		HRUA - 35	
	1/8				
 STRAIGHT	1/16				
	3/32				
	1/8				



RECOMMENDED CHASSIS CUT-OUT