

PRESENTATION

BOITIER ET POUSSOIR EN POLYAMIDE 6-6 NOIR
 COSSES A SOUDER W2 EN LAITON ARGENTE
 CONTACTS: ARGENT + FLASH OR 5µ

**CARACTERISTIQUES MECANIKES
 DES 4 DIRECTIONS**

FORCES : SUIVANT F
 FORCE DE COMMANDE:
 FORCE DE RELACHEMENT (FR):
 FORCE ADMISSIBLE EN FIN DE COURSE:
 TENUE DU POUSSOIR: A LA TRACTION:
 A LA COMPRESSION:

ANGLE MESURE PAR RAPPORT A L'AXE DU POUSSOIR
 COURSE D'APPROCHE (CA):
 COURSE RESIDUELLE ALLER (CRA):
 COURSE RESIDUELLE RETOUR (CRR):
 ENDURANCE MECANIQUE PAR DIRECTION:
 VIBRATIONS + CHOCS :

CARACTERISTIQUES ELECTRIQUES

UN PRODUIT NE DOIT ETRE UTILISE QUE POUR
 L'UN OU L'AUTRE NIVEAU.

BAS NIVEAU	TENSION	30 VDC	115 VAC 400 Hz	VOLTAGE
	COURANT	0.5 mA à 50 mA	0.5 mA à 50 mA	CURRENT
	ENDURANCE ELECTRIQUE PAR DIRECTION	100 000 cycles	100 000 cycles	ELECTRICAL LIFE PER DIRECTION

LOW CURRENT

FORT NIVEAU	TENSION	30 VDC	115 VAC 400 Hz	VOLTAGE
	COURANT INDUCTIF L/R	1 A	1 A	INDUCTIVE CURRENT
	ENDURANCE ELECTRIQUE PAR DIRECTION	100 000 cycles	100 000 cycles	ELECTRICAL LIFE PER DIRECTION

HIGH CURRENT

CONTACT RESISTANCE IN ACCORDANCE WITH MIL 8805 D

CARACTERISTIQUES GENERALES

TEMPERATURE D'EMPLOI:
 TEMPERATURE DE STOCKAGE:
 MASSE:
 ETANCHEITE FACE AVANT :

PRESENTATION

CASING AND BUTTON POLYAMIDE 6-6 BLACK
 SOLDER TERMINAL LUGS W2 SILVER-PLATED BRASS
 CONTACTS: SILVER + GOLD PLATED 5µ

**MECHANICAL PROPERTIES
 OF 4 DIRECTIONS**

F (SEE FIG.)
 OPERATING FORCE:
 RELEASE FORCE:
 PERMISSIBLE FORCE AT END OF TRAVEL:
 PLUNGER STRENGTHNESS: PULLING ACTION:
 PUSHING ACTION:

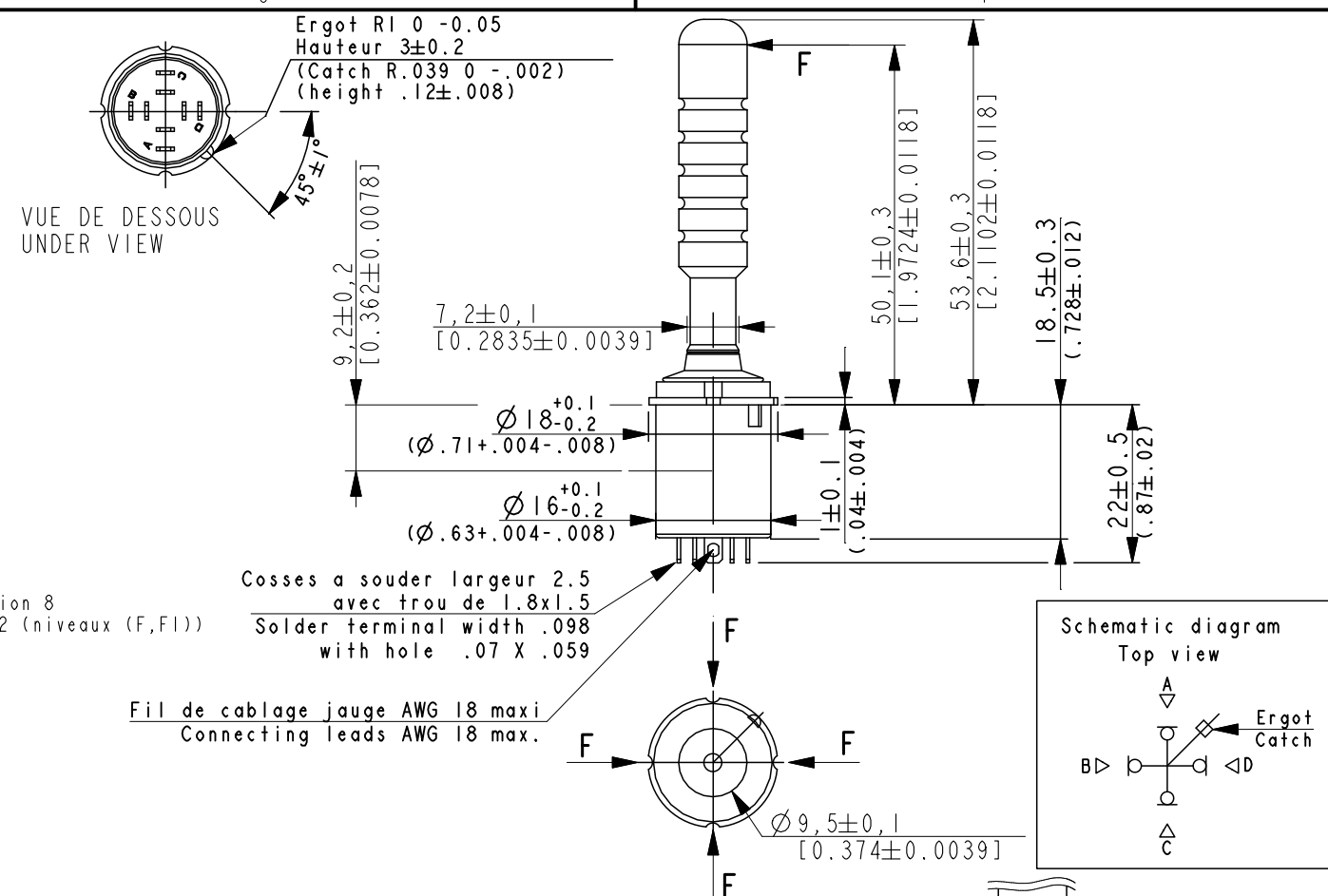
ANGLE MEASURED FROM THE AXIS:
 PRE TRAVEL (CA):
 OVERTRAVEL (CRA):
 RETURN OVERTRAVEL (CRR):
 MECHANICAL STRENGTH PER DIRECTION :
 VIBRATIONS + CHOCS :

0.75N ±0.3N
 0.1N MIN.
 15N MAX.
 25N MAX.
 100N MAX.

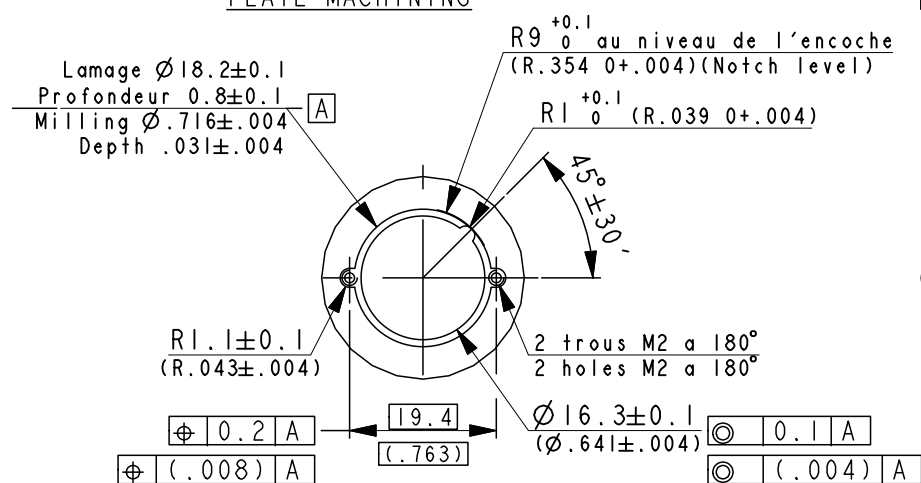
9° 30' MAX.
 1° 30' MIN.
 4° MIN.
 100 000 CYCLES
 RTCA DO-160D/Section 8
 type 1/cat U/zône2 (niveaux (F,F1))

ELECTRICAL CHARACTERISTICS

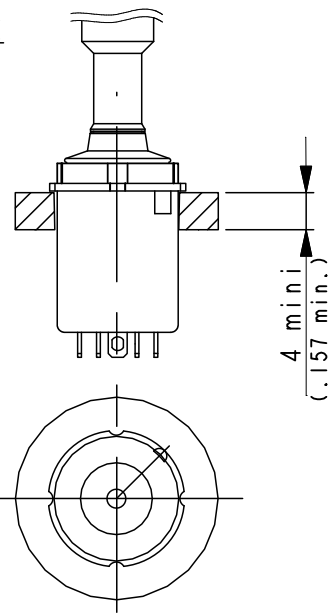
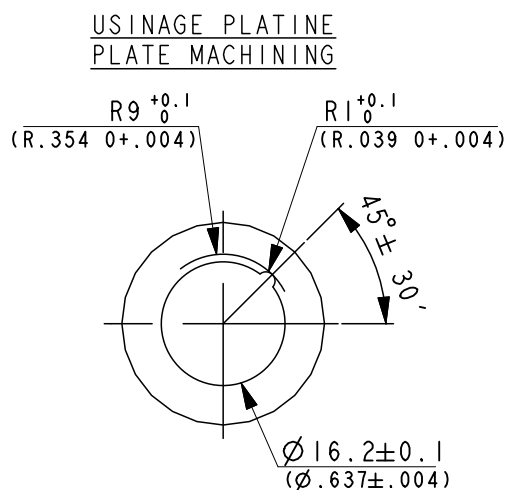
THE SAME PRODUCT MUST BE USED FOR EITHER ONE
 OR THE OTHER CURRENT.



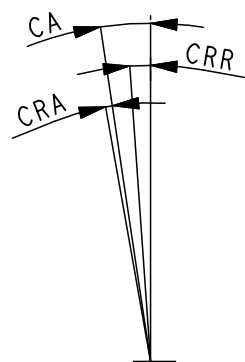
**USINAGE PLATINE
 PLATE MACHINING**



**FIXATION DU TRIM PAR COLLAGE
 ASSEMBLING BY GLUE**



TRAVEL SCHEME



C	CT 1882 : MODIFICATION DU LEVIER Supr. TBC & TBD	Modified by	F_MONCHAL	16/01/2003
		Verified by	S_COLLOT	16/01/2003
		Authorized by		
Toler. gene. lin ± mm		This document is the property of Crouzet-Automatismes. It's contents cannot be reproduced or divulged without the company's written approval. The product data and specifications found on this document do not constitute any contractual obligation. Crouzet-Automatismes and its subsidiaries reserve the right to modify the specifications. All rights of reproduction, modification, reprinting, and translation reserved for all countries.		
Toler. gene. Ang ± degrees				
Crouzet General Raw surface Ra ✓		Scale 1/1		
2, rue du Dr ABEL BP 59, 26902, Valence CEDEX 9 France		Customer: HONEYWELL		Customer Ref.:
Designation/FR: LEVIER 4 DIRECTIONS A EFFET TACTILE CONTACTEUR		PFT001:0<C>;0<M>		
Designation/GB: FOUR WAYS BAT HANDLE WITH TACTILE EFFECT NORMALLY OPEN		Dispatching DI		
Department: CT		DATA SHEET		
Design by F_MONCHAL 31/01/2002		Index Format Folio		
Verif. by P_PAPELIER 31/01/2002		FT83452535FR		
NATO code: FAOX2		Authorized by		
		C A3 1/1		