

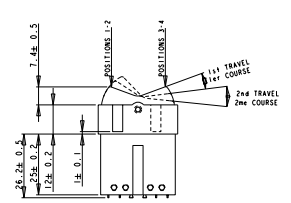
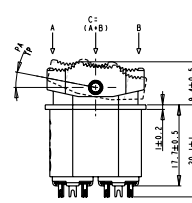
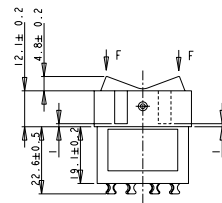
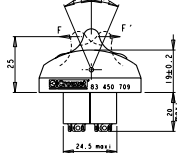
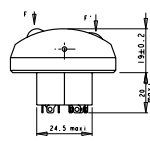


ROCKER SWITCH

Electrical configuration	3 positions			3 positions + validation	5 positions
	2 x NO/NC + 2 x NO/NC	2 x NO/NC + 2 x NO/NC	1 x NO/NC + 1 x NO/NC	1 x NO/NC + 1 x NO/NC	1 x NO/NC + 1 x NO/NC
Flat	83450706	◆	83450503	83454201	83450505
Gendarme	◆	83450709	◆	◆	◆

Mechanical characteristics					
Operating force per direction	9 N max	4 N max	10 N max	2.5 N	17 N → 25 N
Release force	1.2 N min	0.6 N min	2 N min	2 N min	2 N min
Permissible force at end of travel	50 N	40 N	80 N	80 N	80 N
Mechanical life	100 000 cycles	400 000 cycles	100 000 cycles	50 000 cycles	100 000 cycles
Electrical characteristics					
Voltage	5 VDC to 28 VDC	5 VDC to 28 VDC	5 VDC to 28 VDC	5 VDC to 28 VDC	5 VDC to 32 VDC
Current (resistor)	1 mA to 5 A	1 mA to 5 A	1 mA to 5 A	1 mA to 5 A	1 mA to 5 A
Current max @ 30VCC (self)	2 A	2 A	3.5 A	4 A	2 A
Current max @ 115VAC 400Hz (self)	2 A	2 A	2.5 A	1 A	2 A
Contact resistance	25 mOhm	25 mOhm	25 mOhm	25 mOhm	25 mOhm
Electrical life per direction	100 000 cycles	200 000 cycles	100 000 cycles	50 000 cycles	50 000 cycles
General characteristics					
Case	black polyamid 6.6	black polyamid 6.6	black polyamid 6.6	aluminium alloy	black polyamid 6.6
Actuator	black polyamid 6.6	black polyamid 6.6	resin acetate	aluminium alloy	resin acetate
Terminal	solder lugs, silver plated	solder lugs, silver plated	solder lugs, silver plated	solder lugs, silver plated	solder lugs, silver plated
Contact	silver	silver	silver	silver	silver
Operating temperature	-55°C → +85°C	-55°C → +85°C	-55°C → +85°C	-40°C → +70°C	-15°C → +60°C
Storage temperature	-55°C → +85°C	-55°C → +85°C	-55°C → +85°C	-55°C → +85°C	-55°C → +85°C
Weight	35g	35g	18g	12g	29g

Dimensions



Electrical diagram

