



A COMPANY OF STPI GROUP

E610 & ES610

Military Specified

Meets MIL-PRF-83536

General Characteristics

Number of Poles:
Dimensions:

6 Form C (6PDT)
1.483" x 1.053" x 1.010"
(37.7mm x 26.8mm x 25.7mm)
0.26 lb. (118 grams)

Weight:

Switching Characteristics

Operate Time @ 25°C:
Release Time @ 25°C:
Bounce Time:
Mechanical Life:

15 ms Max.
15 ms Max.
1 ms Max.
400,000 Cycles

Environmental Characteristics

Temperature Range:
Vibration (Sinusoidal):
Shock (any axis):
Seal:

-70°C to +125°C
20g 10-2,000 Hz
50g, 6-9 ms
Hermetic (1x10⁻⁸ atm cm³/s)

Electrical Characteristics

Contact Voltage Drop (at rated resistive load)

-Initial:
-After Guaranteed Life:

150 mV Max.
175 mV Max.

Dielectric Strength

Coil to Case @ Sea Level
-Initial @ 60 Hz:
-After Life Test @ 60 Hz:
All Other Points @ Sea Level
-Initial @ 60 Hz:
-After Life Test @ 60 Hz:

1,000 Vrms
1,000 Vrms
1,250 Vrms
1,000 Vrms

Insulation Resistance

-Initial:
-After Life Tests:

100 MΩ Min, @ 500 Vdc
50 MΩ Min, @ 500 Vdc

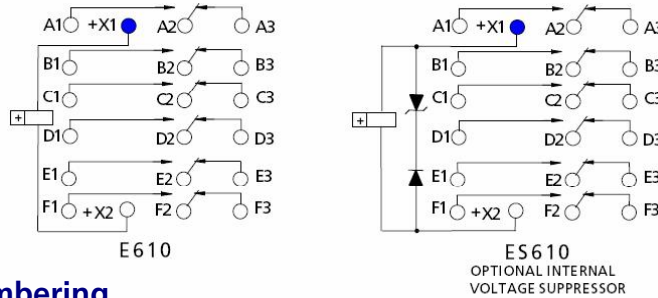
Back EMF (Transient Voltage):

42 Vdc Max. (ES610 Only)

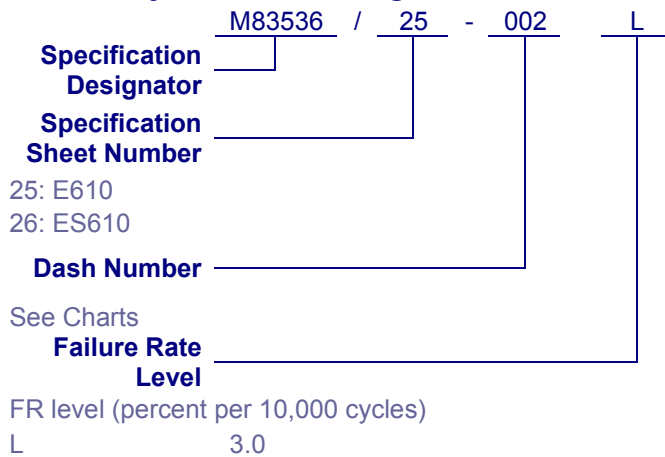
Contact Rating (Amps)

Type of Load (High Level)	Cycles x 10 ³	28 Vdc	115 Vac 400 Hz 1 Phase	115 Vac 50/60 Hz 1 Phase	115/200 Vac 400 Hz 3 Phase	115/200 Vac 50/60 Hz 3 Phase
Resistive	100	10	10	2.5	10	2.5
Inductive	20	8	8	N/A	8	N/A
Inductive	10	N/A	N/A	2.5	N/A	2.5
Motor	100	4	4	2	4	2
Lamp	100	2	2	1	N/A	N/A

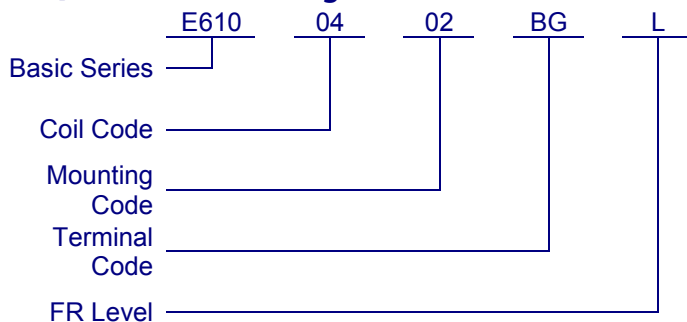
Circuit Diagram



Military Part Numbering



QPL Part Numbering



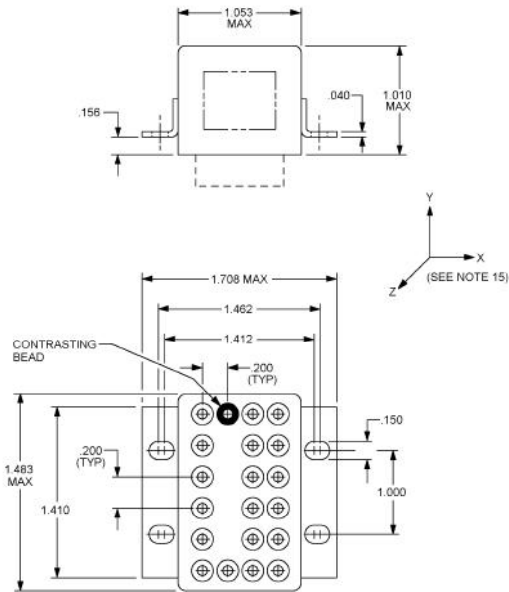
Dash Numbers – Specification Sheet Number 25: E610

Dash Number	Coil Code	Mount	Terminals	Coil Voltage	Max Pickup Voltage at 25°C	Max Pickup Voltage at 125°C	Max Hold Voltage at 125°C	Min Dropout Voltage at -70°C	Coil Resistance (Ω, +/- 10% at 25°C)
001	04	02	AT	28	14	18.7	7	1.5	210
002	04	02	BG	28	14	18.7	7	1.5	210

Dash Numbers – Specification Sheet Number 26: ES610

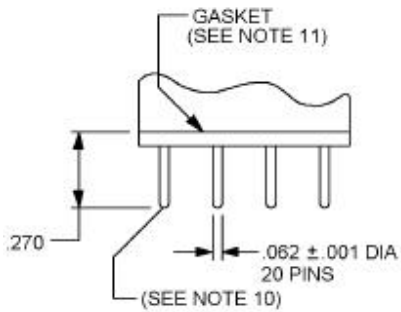
Dash Number	Coil Code	Mount	Terminals	Coil Voltage	Max Pickup Voltage at 25°C	Max Pickup Voltage at 125°C	Max Hold Voltage at 125°C	Min Dropout Voltage at -70°C	Coil Resistance (Ω, +/- 10% at 25°C)
001	04	02	AT	28	14	18.7	7	1.5	210
002	04	02	BG	28	14	18.7	7	1.5	210

Mounting Styles

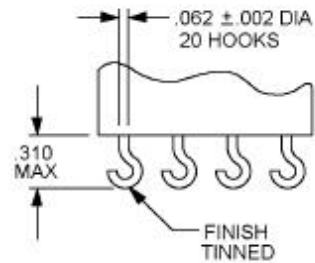


Mount 02:
Raised Vertical Flange Mount

Terminal Styles



Terminal BG:
Gold Plated Plug in



Terminal AT:
Tin Plated Solder Hook