

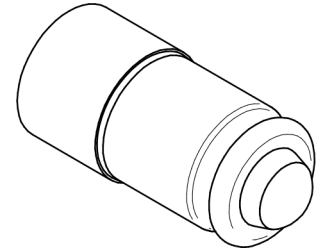


ML 5103 LED BULB REPLACEMENT

FEATURES

- > Wide illumination over large area
- > Water clear lens
- > Surface Mount LED
- > High intensity LED
- > Multiple LED colors available
- > Voltage options (*see chart*)
- > Bi-polar Vac/dc
- > Direct replacement for standard bulb fitting
- > Suitable for AC or DC with wrong polarity installation prevention
- > Internal resistor
- > No color filter required

Colors	Color Code
Red	R
Orange	O
Yellow	Y
Green	G
Blue	B
Warm White	W
Cool White	C



ML 5103 Replacement LEDs are rugged durable LED indicators that are a direct replacement for standard bulb fittings. These LEDs have a water clear lens for a large illumination area. The LEDs are a direct replacement for standard polarity and are manufactured with internal resistor protection. They are available in a large variety of colors and voltages. Warm white can be used behind a colored lens as a true replacement for a filament lamp.

PROPERTIES	
Connection	T1-3/4 Midget Groove S5.7s Base
Weight	0.72 grams
Bulb Size	T1-3/4
Operational Temp.	-30°C to 85°C
Red & Yellow	-40°C to 100°C
Orange	-55°C to 100°C
Storage Temp.	-40°C to 100°C
Orange	-55°C to 100°C

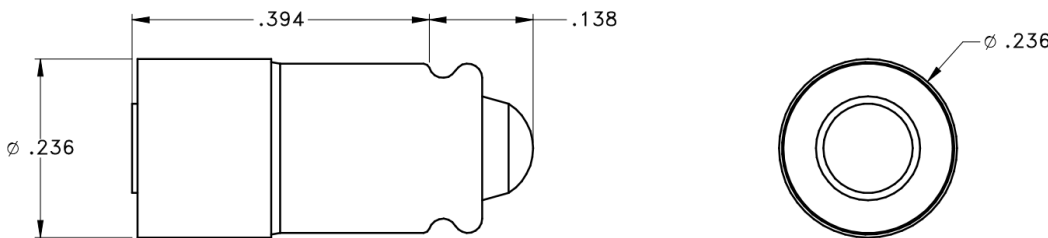
ELECTRO-OPTICAL SPECIFICATIONS

CHARACTERISTICS		ML5103-()-()							
	(Vac/dc) Typical	(mA) Typical	Red	Orange	Yellow	Green	Blue	Warm White	Cool White
Typical Luminous Intensity (mcd)	24	8 – 10	50	72	78	384	106	211	540
Typical Wavelength (λp)	28 (24 – 28)	8 – 10 (8 – 10)	50 645	72 610	78 591	384 520	106 465	211 SEE BELOW	540 SEE BELOW
TYPICAL EMISSION WARM WHITE									
	X	0.4129	0.4390	0.4970	0.4588				
	Y	0.3725	0.4310	0.4466	0.3838				
TYPICAL EMISSION COOL WHITE									
	X	0.280	0.264	0.283	0.330	0.361	0.356		
	Y	0.248	0.267	0.305	0.360	0.385	0.351		
Max Power Dissipation	270 mW								

ELECTRICAL SPECIFICATIONS

Voltage (Vac/dc)
24
28

DIMENSIONS (INCHES)



ML 5103 ORDERING INFORMATION

FAMILY SERIES – COLOR – VOLTAGE ML5103-()-()					
Model No.	Color	Voltage	Model No.	Color	Voltage
ML5103-R-24	Red	24	ML5103-R-28	Red	28
ML5103-O-24	Orange	24	ML5103-O-28	Orange	28
ML5103-Y-24	Yellow	24	ML5103-Y-28	Yellow	28
ML5103-G-24	Green	24	ML5103-G-28	Green	28
ML5103-B-24	Blue	24	ML5103-B-28	Blue	28
ML5103-W-24	Warm White	24	ML5103-W-28	Warm White	28
ML5103-C-24	Cool White	24	ML5103-C-28	Cool White	28

NOTE:

LABELING INFORMATION	
Laser etch case	ML5103
Laser etch date code	YYWW
Label ESD BAG:	Example:
Cage code	10236
Model number	ML5103-R-24
Date code (YYWW)	2030

ML 5103 LED BULB REPLACEMENT

© 2021 L3Harris Technologies, Inc. | 07/2021

Refer to your Trade Compliance Lead or Empowered Official for exact disclaimer language.

L3Harris Technologies is an agile global aerospace and defense technology innovator, delivering end-to-end solutions that meet customers' mission-critical needs. The company provides advanced defense and commercial technologies across air, land, sea, space and cyber domains.



1025 W. NASA Boulevard
Melbourne, FL 32919
t 513 943 2000 | f 513 943 2050
info@L3Harris.com