

Series - W300

PUSHBUTTON SWITCHES Moisture-proof Pushbutton Switches

| FEATURES | SPECIFICATIONS | CURRENT RATINGS | | | | | | | |
|--|--|-----------------|-----------------|-------------------|-----------|-----------|------|---------------------|-----------|
| | | Part Number | Number of Poles | Type of Operation | 28VDC | | | 125VAC ^① | |
| | | | | | Resistive | Inductive | Lamp | Resistive | Inductive |
| <ul style="list-style-type: none"> Moisture-proof Momentary snap action Black plunger (as standard) Various color adapters available | <ul style="list-style-type: none"> Electrical life: 25,000 operations minimum at rated current Temperature range: -67°F to +185°F (-55°C to +85°C) Exceeds MIL-PRF-8805 Seal Level 2 Operating force: 5 ± 1 lb (22N ± 4.4N) Total plunger travel: 0.085 in. (2.2mm) approx. Weight with adapter: 0.025 lbs approx. | W300 | 1 | Momentary | 10 | 5 | 3 | 15 | |

① .75 PF

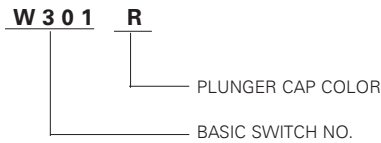
SELECTION TABLE

| Series and Type | Operation | Circuit Catalog Schematic | Catalog Number |
|-----------------|-----------------------|---------------------------|----------------|
| W300 | Momentary Snap Action | 1 P.S.T.-NO | W301 |
| | | 1 P.S.T.-NC | W302 |
| | | 1 P-2 | W303 |



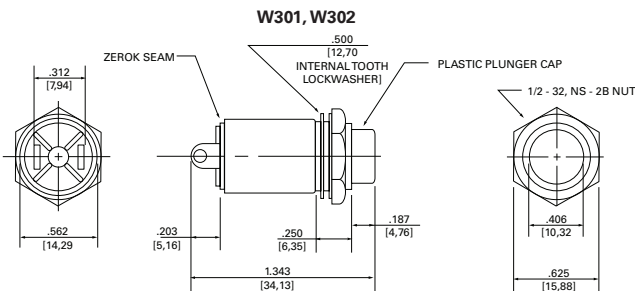
W300

WHEN ORDERING SPECIFY...



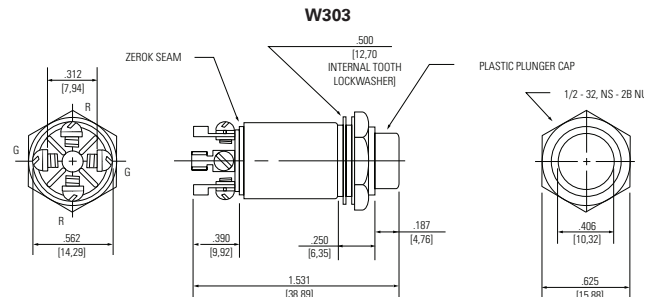
- Plunger Color:
 - Gray: GY
 - White: W
 - Red: R
 - Black: No Letter

APPROXIMATE DIMENSIONS - W300



SUPPLIED WITH TWO TERMINAL SCREWS, LOCK WASHERS AND LUGS.

W300 SERIES W/SOLDER TERMINALS



SUPPLIED WITH FOUR TERMINAL SCREWS, LOCK WASHERS AND LUGS.

W300 SERIES W/SOLDER LUG TERMINALS

STANDARD
0.00 = inches
[0,0] = mm

Dimensions for reference only.

Mounting and terminal hardware supplied unassembled.

