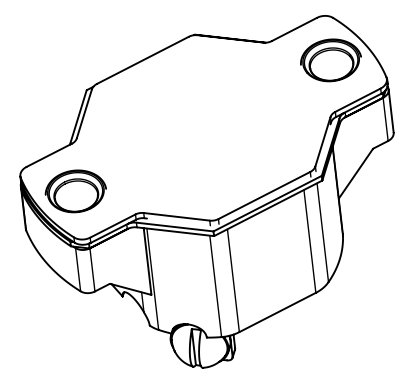
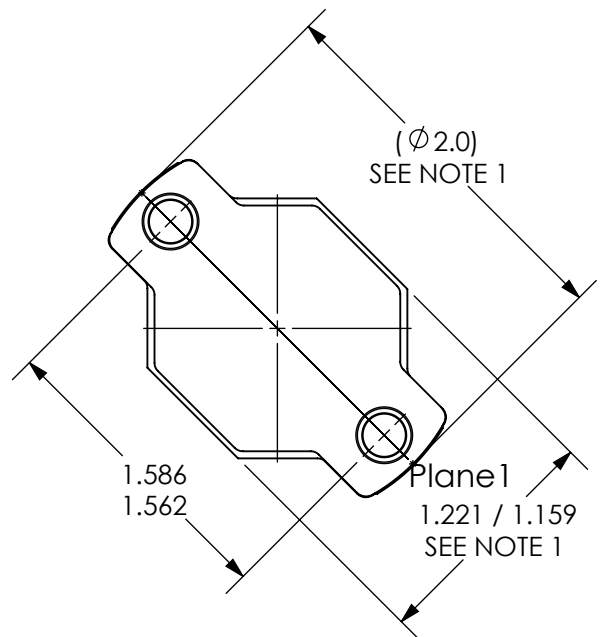


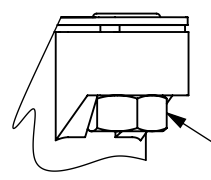
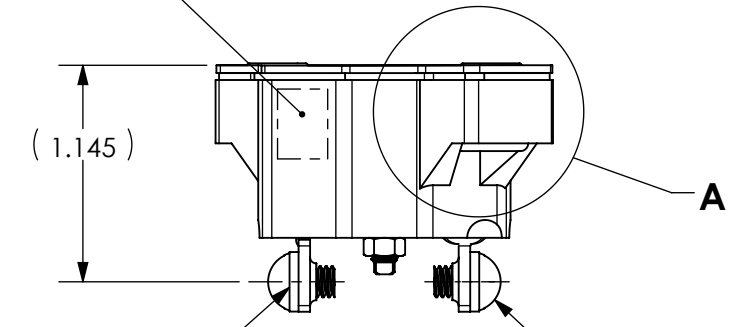
ZONE	REV.	REVISION DESCRIPTION	ECN NO.	DATE
	N	IN PERFORMANCE CHARACTERISTIC TABLE: WEIGHT "43 GRAMS MAX" WAS "41 GRAMS MAX"; SK	ECO-122319	05-NOV-2015



PERFORMANCE CHARACTERISTICS

VOLTAGE RATING	30 VDC/120 VAC
200% OVERLOAD	
2-10 AMPS	20-150 SECONDS
12.5-40 AMPS	5-55 SECONDS
ULTIMATE TRIP % AT 77° F RATED CURRENT	
MINIMUM	100%
MAXIMUM	135%
INTERRUPT CAPACITY	SAE J553 AND ABYC-E11
ENDURANCE	CYCLED 30 MINUTES AT 400% RATED CURRENT
DIELECTRIC STRENGTH	1500 VAC MINIMUM MIL-STD-202 METHOD 301
INSULATION RESISTANCE	100 MΩ MINIMUM MIL-STD-202 METHOD 302 CONDITION B
VIBRATION RESISTANCE	10G MIL-STD-202 METHOD 204 CONDITION A
SALT SPRAY	96 HOURS PER SAE J1455
IGNITION PROTECTED	SAE J1171
WEATHERPROOF	SAE J553
WEIGHT	43 GRAMS MAX.
UL LISTED	E 36869

PART NUMBER AND DATE CODE LOCATION



DETAIL A

OPTIONAL 2X #8-32 UNC-2B THREADED LOCKING MOUNTING BUSHING FURNISHED ONLY WHEN SPECIFIED ON ORDER.

2X (.047) THK. LOCKWASHER

2X .250 LONG #8-32 UNC-2A ROUND HEAD SCREW

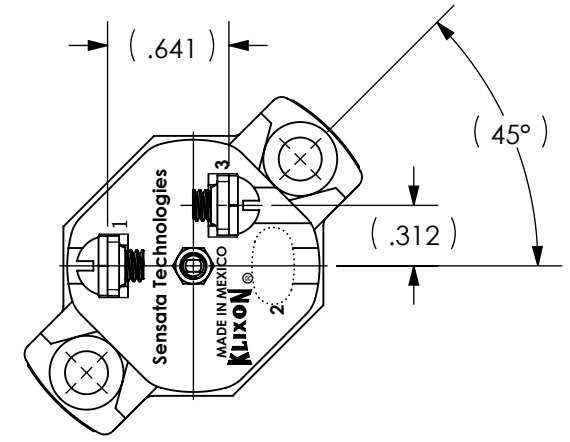


FIG. #1
BOTTOM VIEW FOR 2 AMP THRU 10 AMP

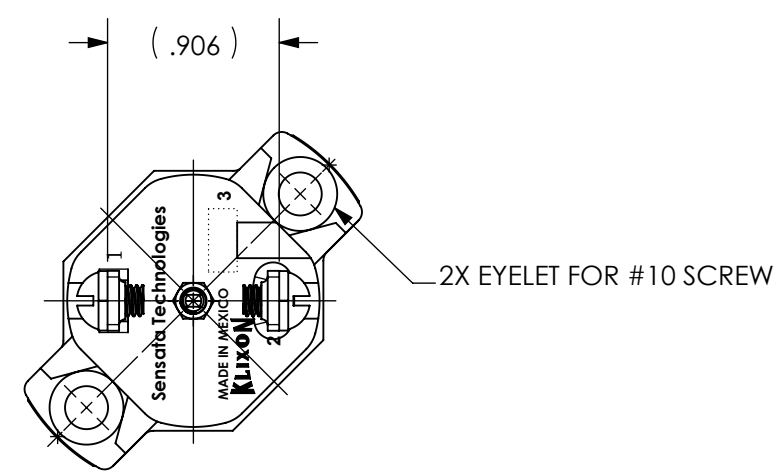


FIG. #2
BOTTOM VIEW FOR 12 1/2 AMP THRU 40 AMP

NOTES:

- 1. DIMENSION DOES NOT INCLUDE SEALING GASKET.

PART NO.	AMP RATING	FIGURE NO.	PART NO. WITH THREADED INSERTS
CDA-40	40	2	CDA-40-I
CDA-35	35	2	CDA-35-I
CDA-30	30	2	CDA-30-I
CDA-25	25	2	CDA-25-I
CDA-20	20	2	CDA-20-I
CDA-17½	17½	2	CDA-17½-I
CDA-15	15	2	CDA-15-I
CDA-12½	12½	2	CDA-12½-I
CDA-10	10	1	CDA-10-I
CDA-8	8	1	CDA-8-I
CDA-6	6	1	CDA-6-I
CDA-5	5	1	CDA-5-I
CDA-4	4	1	CDA-4-I
CDA-3	3	1	CDA-3-I
CDA-2	2	1	CDA-2-I

FOR REFERENCE ONLY, CHECK LATEST REVISION BEFORE USE. PARTS MADE TO THIS PRINT MUST CONFORM TO E9898 REV. E.

DRAWN C.RODZEN
DATE 10-JUL-2007

ENGINEER R.GENEREUX
DATE 10-JUL-2007

APPROVED P.BERG
DATE 10-JUL-2007

APPROVED V.RAMIREZ
DATE 10-JUL-2007

SENSATA TECHNOLOGIES PROPRIETARY AND CONFIDENTIAL. NEITHER THIS PRINT NOR THE INFORMATION CONTAINED HEREON IS TO BE USED AGAINST THE INTERESTS OF SENSATA TECHNOLOGIES OR AGAINST THE INTERESTS OF ANY OF ITS AFFILIATED COMPANIES OR WHOLLY OWNED SUBSIDIARIES.

INTERPRET DIMENSIONING AND TOLERANCING PER ASME Y14.5-2009. UNLESS OTHERWISE SPECIFIED DIMENSIONS ARE IN INCHES.

TOLERANCES
DECIMALS X.XXX ±0.031 ANGLES X° ±5°

DO NOT SCALE DRAWING

THIRD ANGLE PROJECTION

Sensata Technologies

529 PLEASANT STREET
P.O. BOX 2964
ATTLEBORO, MA 02703

TITLE
AUTOMATIC RESET CIRCUIT BREAKER

SIZE DWG NO. REV.
C **CDA** N

SCALE 1:1 SOLIDWORKS SHEET 1 OF 1

PROJECT: 1